



# Distance-independent everyday healthcare



**Maria Magdalena Holmgren**

Process Manager on e-Health, Norrbotten County Council, Sweden

[mariamagdalena.holmgren@nll.se](mailto:mariamagdalena.holmgren@nll.se)



**NORRBOTTEN COUNTY COUNCIL**



e-Health: Development and use of information and communication technology to facilitate medical and social care. [Bild 1]





## Process Development Management on e-Health



e-Health: Development and use of information and  
BILD 2 communication technology to facilitate medical and social care. [Bild 2]





# e-Health Innovation System



BILD 3 e-Health: Development and use of information and communication technology to facilitate medical and social care. [Bild 3]





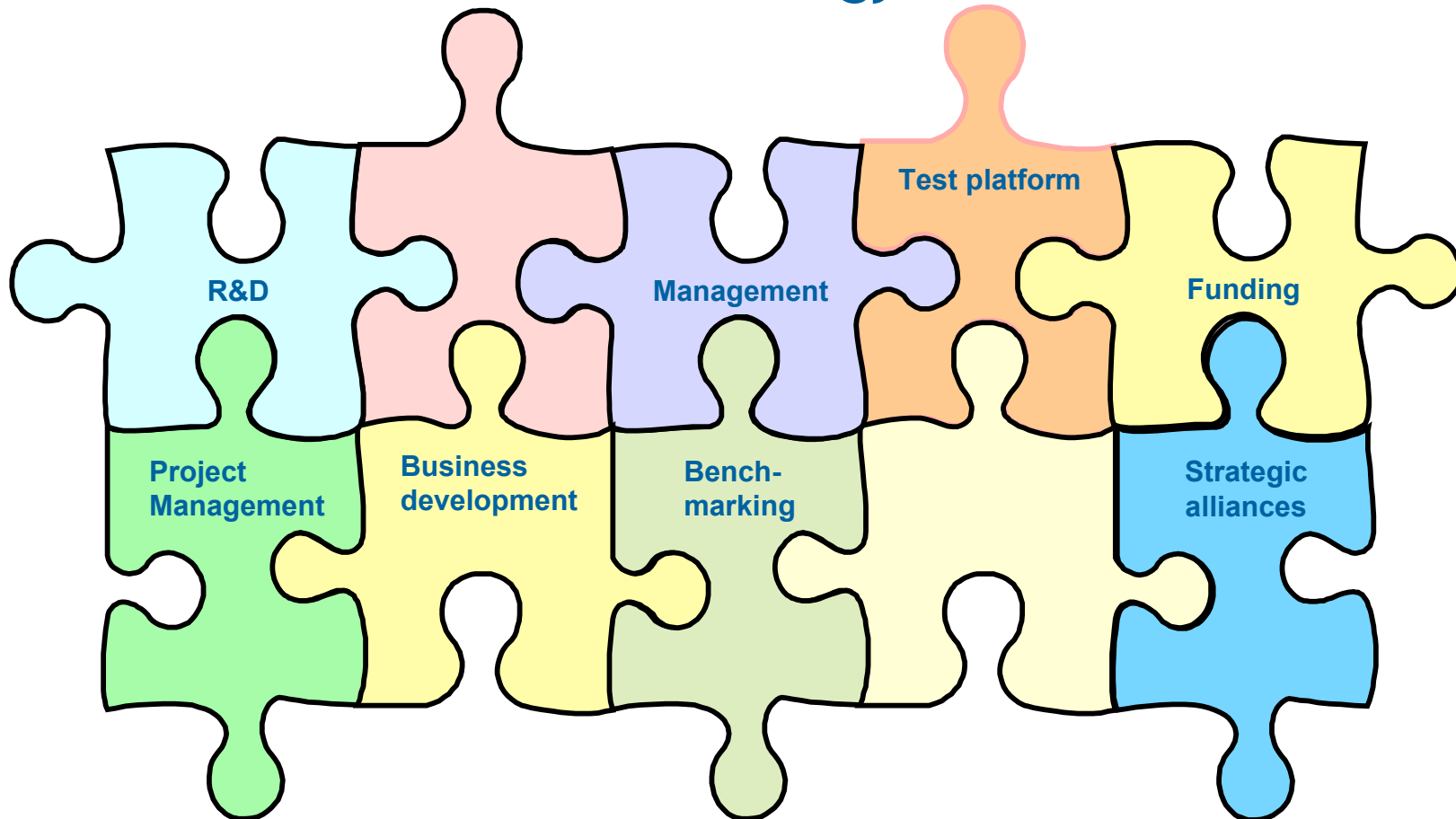
## Operational focus of the Centre of excellence in e-Health at Luleå University of technology

- Needs-driven/applied research.
  - Integrated research and business development.
  - Collaboration between research, the political sphere and business.
- Method development and implementation of **needs analyses** as basis for new products and services
  - **Collaboration** between care providers, patients/users and relatives
  - Consultation via **distance-spanning** technology
  - **Availability** of care information and self-care among patients and citizens
  - Processes to turn research results into **commercial products/services**
  - Models for **knowledge sharing** between research and business





# Centre of excellence in eHealth at Luleå University of technology



e-Health: Development and use of information and communication technology to facilitate medical and social care. [Bild 5]





## Innovation system as a dynamo in regional development

- **Participatory players** who can enable research, relevant industrial operations, needed capital supply, insights into business prospects and marketing, entrepreneurial experience, etc
- An environment that in addition to **research competence** contain necessary **infrastructure** in the form of business incubators, business development, mentors, patent agencies, licensing, legal advice, etc
- **Effective interaction between research**, business, public sector and political institutions is central to functional innovative environments. Commitment from several players in the community is required





## Commercialising innovations

- Strong research base
- Executive processes to transform research results into commercial products/services
  - Advanced business skills
  - Developed interaction with other players in university and the world about who work with business innovation and development
  - Active presence and commitment from the business sector
- Models for knowledge sharing between research and business
  - Development of the entire regional innovation environment in the county





# Centre of excellence in e-Health at Luleå University of Technology (LTU)

- **Common platform**
  - Coordinate and profile e-Health research input at LTU
  - Ensure clear connection between research and business development in e-Health
  - Build a common arena for the entire partnership in developing a dynamic innovation system for e-Health
- **Collaboration in a needs-oriented operational perspective**
  - Make health and medical care an integrated part of the information society, not principally a technical development process
  - Strong interdisciplinary aims: health sciences, medical Informatics and technology, cognitive psychology and behavioural science, sociology, financial administration, ethics and law.
- **Pooling of competence resources in e-Health**
  - Skills and support for the public domain: assess how regional development funds are used for e-Health
  - Referral body: ensure adequate research, operational and business standards





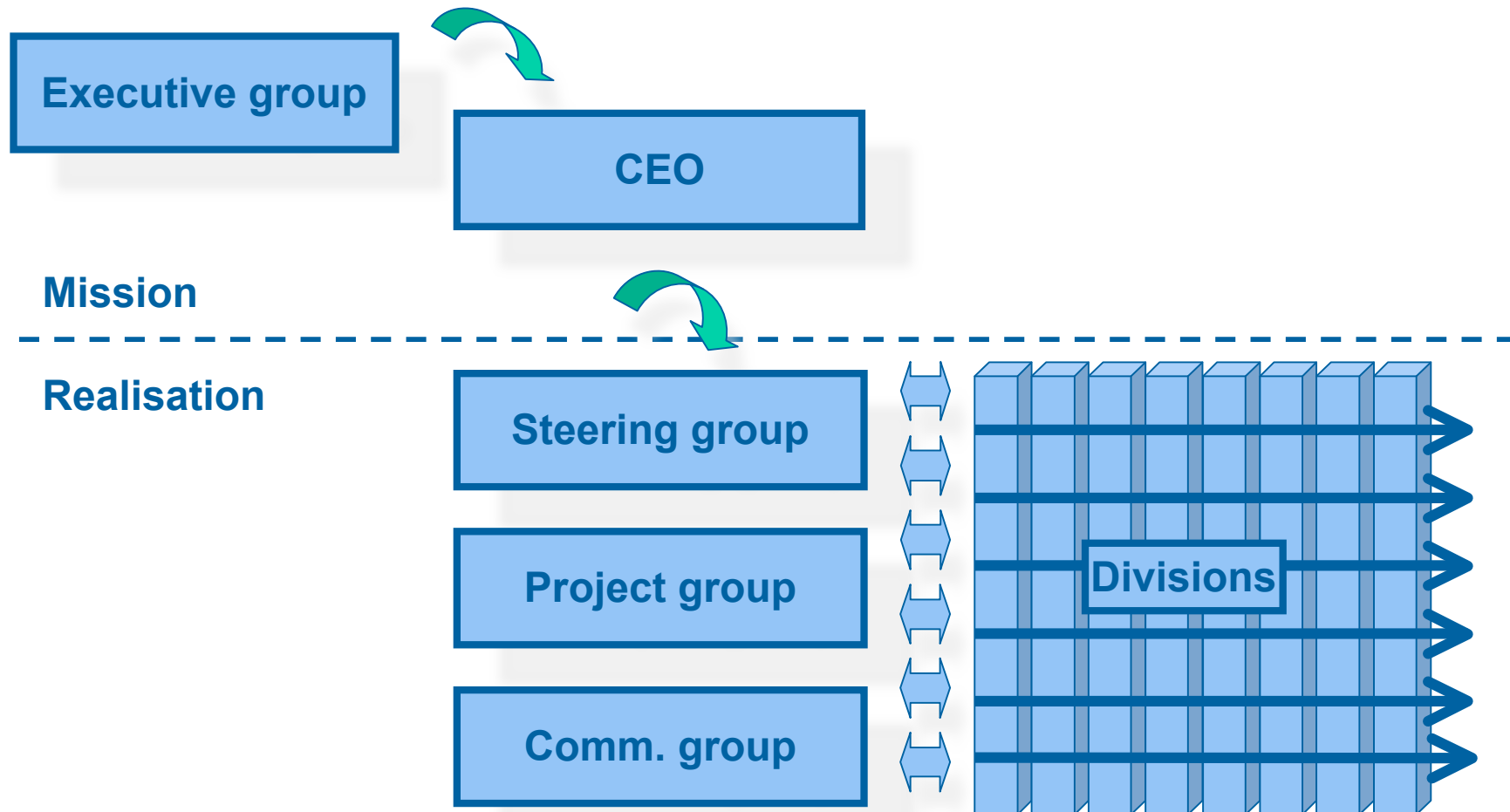
## Basic skills

- Develop methods for systematic needs analyses
- Advanced market surveillance on national and international developments in e-Health: development of both methodology and practical implementation
- Advanced testing processes for e-Health applications with dedicated laboratory environment
- Ensuring support for development input: common arena for dialogue and standpoint on innovative input. Conditions for ongoing learning: development and implement pedagogical instruments and active teaching
- Powering and supporting a network between the companies in the county





# Project organisation e-Health





## Project organisation e-Health

<b>Principal:</b>	Elisabeth Holmgren, CEO
<b>Project owner:</b>	Kurt-Åke Hammarstedt, Regional Development Department
<b>Steering group:</b>	Kurt-Åke Hammarstedt, Regional Development Department (chair) Ulla Isaksson, Medicine Division Gunnar Persson, Health and Medical Care Unit Bo Westerlund, Primary Care Division Mikael Norlander, County Technical Services Division
<b>Project manager:</b>	Maria Magdalena Holmgren, Process Development Manager e-Health
<b>Project group:</b>	Susanne B. Andersson, Medicine Division Kenneth Blom, Adult Psychiatry Division Per-Olof Egnell, CDH Maria Magdalena Holmgren, Process Manager e-Health Åke Hellström, Dental Division Magnus Johansson, Diagnostics Division, Kristina Jonsson, County Technical Services Division Stefan Lundström, County Technical Services Division Kenneth Sjaunja, EU Coordinator Veronica Sundström, Operation Specialities Division Jonas Thörnqvist, Primary Care Division Jeanette Öhgren, Information Unit
<b>County Council Executive Rapporteur :</b>	Agneta Granström
<b>Reference group: :</b>	H-LG, RUP-BG





## **MOandatory requirements for krav the County Council e-Health development project:**

- The respective benefits to the citizen and the patient shall be made clear
- The proposed project shall contribute towards solutions that save on resources and are clearly beneficial
- Resources and skills to run and disseminate the project shall be identified and secured
- Project ideas shall have solid support and acceptance in the responsible division and its management
- An overall needs analysis shall be carried out in close consultation with involved interests
- Recipients of project results shall be determined and proposals for handover and implementation shall be included in the project description. The project owners shall after project evaluation make a decision on administration of the project results.
- The project ideas shall have the support of the e-Health project group

